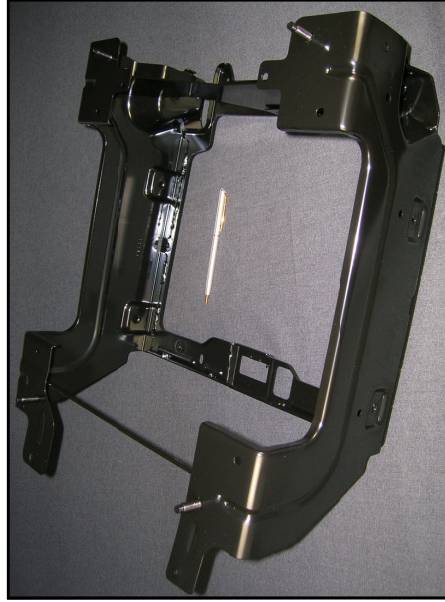
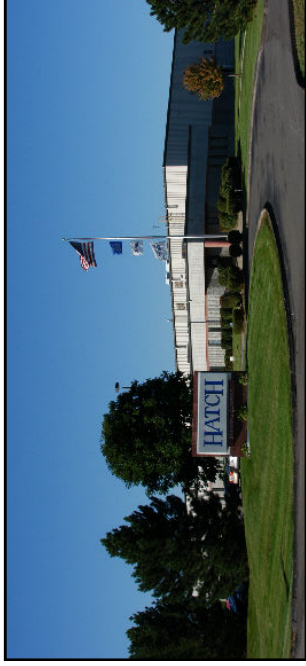


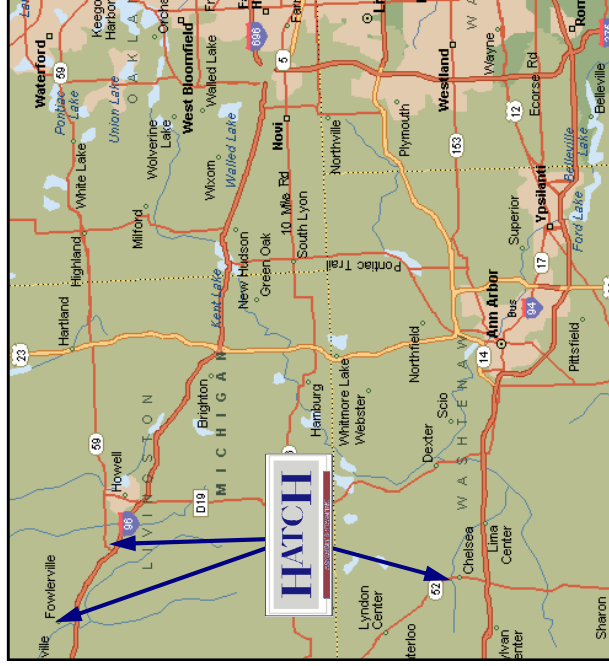
## Product Examples



[www.HatchStamping.com](http://www.HatchStamping.com)



**Headquarters**  
**Stamping, Sales & Engineering**  
**635 East Industrial Drive, Chelsea, MI 48118**



## Hatch Headquarters

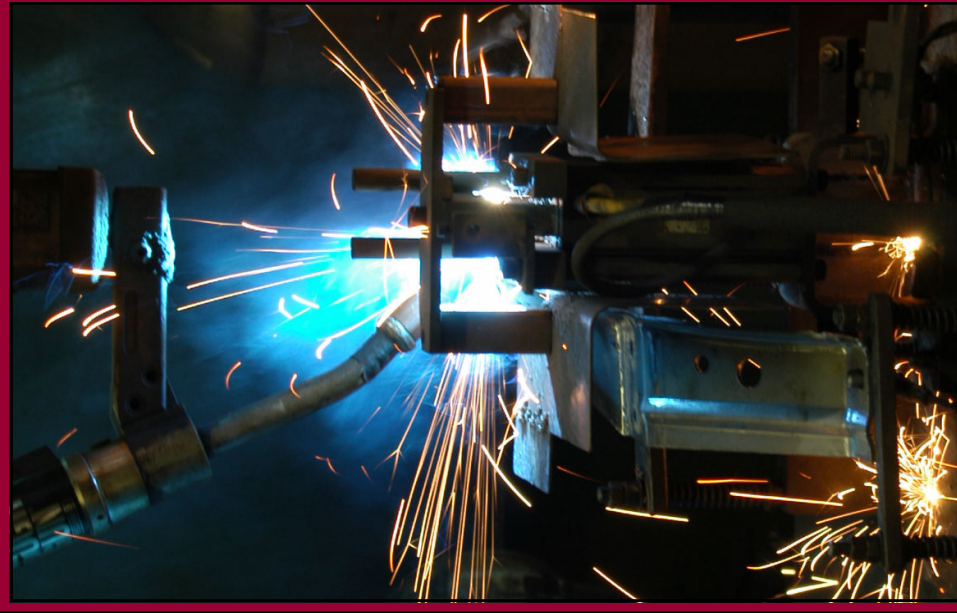
635 E. Industrial Drive  
Chelsea, MI 48118

Tel: (734) 475-8628

Fax: (734) 475-6255

Email: [hatch.mail@hatchstamping.com](mailto:hatch.mail@hatchstamping.com)

[www.HatchStamping.com](http://www.HatchStamping.com)



Assemblies   Stampings   Progressive Dies  
Prototypes   Design  
Program Management   Engineering  
Research & Development

# HATCH

ASSEMBLY & STAMPING



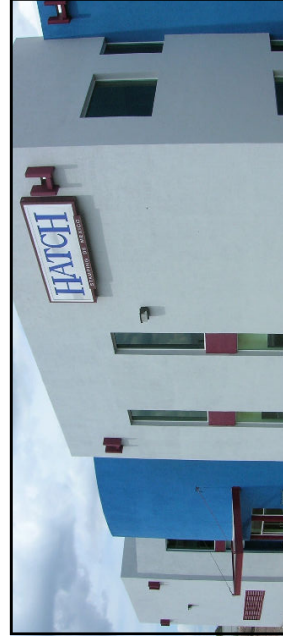
**Mechanisms & Assembly**  
 901 Garden Lane, Fowlerville, MI 48836



**Weld & Assembly**



**Stamping, Prototype & Dies**  
 570 Cleveland Street, Chelsea, MI 48118



**Stamping, Weld & Assembly**  
 Circ. El Marques Sur No. 10  
 Parque Industrial El Marques  
 Queretaro, C.P. 76240, Mexico

## Program Management & Engineering

Hatch program management and engineering supports the customer to meet all design, manufacturing, quality, delivery, and cost initiatives. This is performed with cross functional APQP driven teams.

## Manufacturing

Utilizing a wide range of press sizes, Hatch is capable of meeting your requirements.

### Progressive Presses:

- \* 1- 75 Ton
- \* 4 - 100 Ton
- \* 2 - 150 Ton
- \* 4 - 200 Ton
- \* 2 - 300 Ton
- \* 1 - 400 Ton With 132 Inch Bed
- \* 1 - 600 Ton With 132 Inch Bed
- \* 1 - 600 Ton With 144 Inch Bed
- \* 1 - 1000 Ton With 156 Inch Bed

### Assembly Capabilities:

- \* Robotic & Automated Sub-Assembly
- \* Robotic & Automated Resistance Weld
- \* Robotic MIG Weld
- \* Automated Roll Form Tapping
- \* Automated Staking
- \* Automated Orbital Rivet
- \* Robotic & Automated Grommet Insertion
- \* Nylon Coating
- \* Vision Inspection Equipment
- \* Poka Yoke (Mistake Proofing)
- \* Weld Cut & Etch Laboratory

## Quality

- \* ISO/TS 16949:2002
- \* ISO14001:1996
- \* Q1

### Quality Policy Statement

Hatch Stamping Company will pursue never ending improvement of products, processes and services through quality systems.



QUALITY SYSTEM  
 REGISTERED TO  
 ISO/TS 16949:2002

